

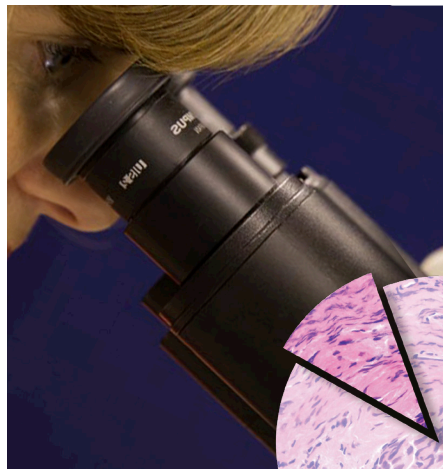


## Requesting Consumables

### Specimen collection consumables

All Histology and Cytology specimen collection consumables can be obtained from CPS. Please allow 5-7 days for delivery of consumables.

There is a standard form for requesting consumables, which can be downloaded.



Once completed the form needs to be faxed to 01923 233296 or emailed to [info@cellpathservices.co.uk](mailto:info@cellpathservices.co.uk). For urgent despatch of consumables you are welcome to call our office on 01923 233299.

### Histopathology

We can supply various sizes of pre-filled 10% neutral buffered formalin pots: 20ml, 60ml and 120ml.

Formalin buckets for larger specimens are also available from us in the following sizes: 500ml, 1000ml, 2500ml, 5000ml, which can be supplied with 10% neutral buffered formalin on request.

### Diagnostic cytology

All supplies such as glass slides, slide boxes, cytofix spray and universal containers of various sizes can be provided.

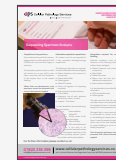
### Gynaecologic cytology

All the necessary collection supplies can be provided. These include conventional brush, spatula, Thin-Prep vials and plastic broom.



## Other useful leaflets

In addition to this healthcare staff information leaflet we also have:



Requesting Specimen Analysis



Handling of Histological Samples



Handling of Diagnostic Cytology Samples



Handling of Gynaecologic Cytology Samples



Requesting Consumables



Specimen Packaging & Transportation

To see our full range of Healthcare Information leaflets visit our website.

For further information please contact us on:

**01923 233 299**  
Out of hours: **07775 44 66 88**

**[www.cellularpathologyservices.co.uk](http://www.cellularpathologyservices.co.uk)**  
[info@cellpathservices.co.uk](mailto:info@cellpathservices.co.uk)